

RUGGED • PRECISE • DEPENDABLE

SATISFACTION

**JDJ**

GUARANTEED

TRAILERS

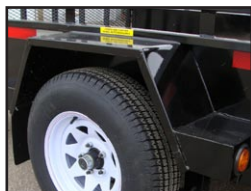
# GENERAL DUTY LANDSCAPE SINGLE GDLS



\*Trailers in photos may contain optional features



➤ Carlisle Radial Tires



➤ Smooth Plate Fender



➤ Welded D-Rings



➤ Sealed Wiring Harness



➤ LED Lights



➤ 2K Epoxy Primer/2K Paint

## STANDARD FEATURES

- GVWR 2990 lb/ 1360 kg. (1x3500 lb) drop axle
- 2" Ball Coupler
- Removable Ramp-easy handling
- ST205/ 75R14 Carlisle Radial Tires 6 Ply
- 2000lb A Frame Jack w/ Removable Foot
- 15" Steel Sides plus 4" Top Rail
- 2x8 Plank Floor
- HSS Tubular Steel Construction
- 4 Welded D-Rings
- Philips Duraflex Sealed Wiring Harness
- LED Rubber Mounted Waterproof Lights (Lifetime Warranty)
- Fully Sandblasted
- 2K Epoxy Primer & 2K Polyurethane High Gloss Topcoat (Black)

Made in Canada Matters



[www.jdjtrailers.com](http://www.jdjtrailers.com)

## MODEL PHOTOS



\*Trailers in photos may contain optional features

## POPULAR OPTIONS

- 12" Higher Sides
- Add 80" Wide on 6' Wides models
- Utility Rack
- Trimmer Rack
- PVC or Steel Tongue Box w/Lid
- Steel or Mesh Box Side Mount up to 2'
- Side Gate 4'x4'
- Add Electric Brakes
- Hydraulic Brakes-Model 60-6000 lb
- Upgrade to 15" Radial Tires
- Upgrade to 14" Radial Goodyear Marathon Tires
- Upgrade to 15" Radial Goodyear Marathon Tires
- Spare Tire Mounted
- Bi Fold Gate All Mesh
- Bi Fold Gate 1/2 Smooth Plate 1/2 Mesh
- Exchange Ramp for 15" Pick Up Gate or Barn Door
- **More Options Available!**

## OPTION PHOTOS



➤ Galvanizing



➤ Mounted Spare Tire

## TRAILER SPECS

	4 X 8	5 X 8	5 X 10	6 X 10	6 X 12
<b>GVWR</b>	1359 kg (2990 lbs)	1359 kg (2990 lbs)	1359 kg (2990 lbs)	1359 kg (2990 lbs)	1359 kg (2990 lbs)
<b>Curb Weight</b>	355 kg (780 lbs)	418 kg (920lbs)	418 kg (920lbs)	436 kg (960lbs)	436 kg (960lbs)
<b>Payload</b>	1007 kg (2215 lbs)	941 kg (2070 lbs)	941 kg (2070 lbs)	922 kg (2030 lbs)	922 kg (2030 lbs)
<b>Bed Width</b>	4'2"	5'	5'	6'	6'
<b>Bed Length</b>	8'2"	8'	10'	10'	12'
<b>Construction</b>	Structural Steel	Structural Steel	Structural Steel	Structural Steel	Structural Steel
<b>Ramps</b>	4' high mesh	4' high mesh	4' high mesh	4' high mesh	4' high mesh

## AVAILABLE COLOURS

Today's toughest trailer demands a super tough Acrylic Polyurethane finish to be scratch and abrasion resistant and eliminate stone chips. JDJ trailers are fully Sandblasted, Degreased, Acid Etched, then painted with 2k Epoxy Primer and 2k Polyurethane Topcoat. Available in any colour:       (Galvanizing)